






29/103 Sutton Street REDCLIFFE QLD

3  2  2 

Discover the perfect blend of space, style and convenience in this beautifully appointed top floor three bedroom apartment. Ideally positioned in a highly sought after central location.

Offering an exceptional lifestyle, this residence is just a short walk to the waterfront, Redcliffe Lagoon, shopping, cafés and public transport.

Step inside to an inviting open plan layout enhanced by high ceilings and an abundance of natural light. The modern kitchen features stone benchtops, quality appliances and ample storage; perfect for everyday living and entertaining.

[For full version visit the website](https://www.cpqld.com.au)

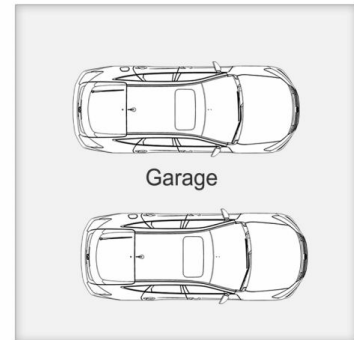
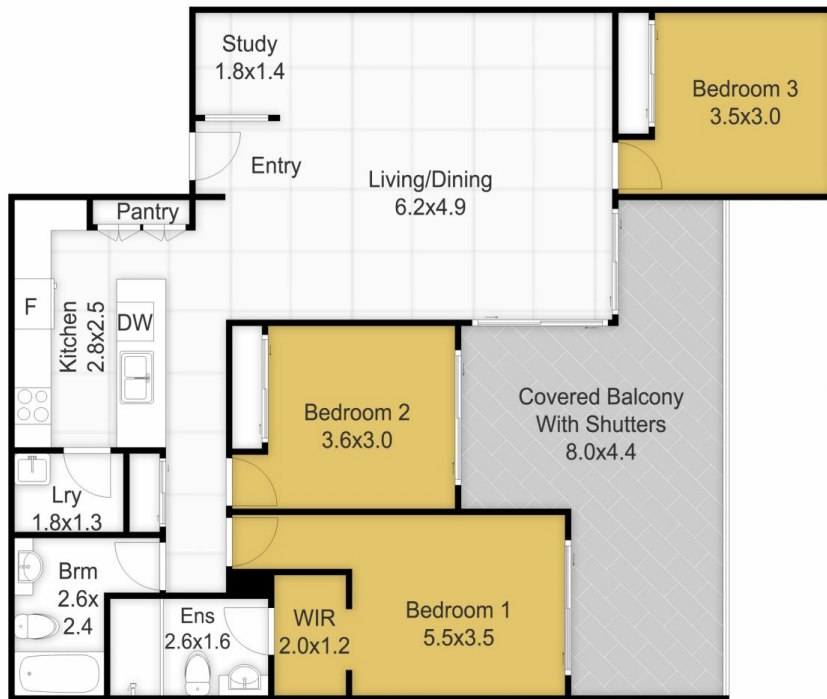
Type : Unit
Price : \$ 1,040,000
Building Size : 135 sqm
View : <https://www.cpqld.com.au/8560336>



Ian McLachlan
07 3283 3313



Matt Burton
07 3283 3313



29/103 Sutton Street, *Redcliffe*

The floor plan is not to scale; measurements are indicative and in metres. Exterior elements are not in position.
Plans should not be relied on. Interested parties should make and rely on their own enquiries.



Internal - 103
External - 25
Total - 128